

HEALY LONG & JEVIN "DO IT IN CONCRETE"

HLJ CONCRETE PUMPING SERVICES
WORK SMARTER....NOT HARDER

Thank you for your interest in our concrete pumping services. Our fleet is the newest and most advanced in the tri-state area run by the best, most qualified and safest operators in the business

We look forward to working with you and for you!



302-654-8039



concrete@heallylongjevin.com



HEALYLONGJEVIN.COM



2000 Rodman Road
Wilmington, DE

HEALY LONG & JEVIN OFFERS CONCRETE
PUMPING SERVICES IN DELWARE,
PENNSYLVANIA, NEW JERSEY AND MARYLAND

CONCRETE PUMP RENTALS



Our Concrete Pumping Fleet Includes the Following for Rentals

47 Meter Putzmeister Boom Pumps

- 151' Vertical Reach
- 134' Horizontal Reach

42 Meter Putzmeister Boom Pumps

- 136' Vertical Reach
- 122' Horizontal Reach

38 Meter Putzmeister Boom Pumps

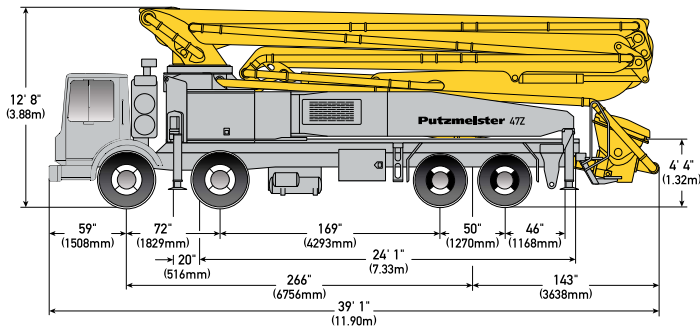
- 123' Vertical Reach
- 107' Horizontal Reach

TK 50 Trailer Pump

- Perfect for small projects

Contact Us Today
for Additional
Information and
Pricing
Ask About our
Total Project
Discounts!





47Z-METER TRUCK-MOUNTED SPECIFICATIONS

Length	39' 1"	(11.90m)
Width	8' 2"	(2.50m)
Height	12' 8"	(3.88m)
Wheelbase	266"	(6,756mm)
Front axle weight	32,831 lbs	(14,892 kg)
Rear axle weight	37,289 lbs	(16,914 kg)
Approx total weight	70,120 lbs	(31,806 kg)

Based on Model MACK MRU 613 with .16H pump cell.

Weights are approximate and include pump, boom, truck, driver and some fuel. Varies with options selected. Dimensions will vary with different truck makes, models and specifications.

BOOM SPECIFICATIONS | Z-FOLD DESIGN

Height & Reach

Vertical reach	151' 3"	(46.10m)
Horizontal reach	134' 11"	(41.10m)
Reach from front of truck*	124' 8"	(38.00m)
Reach depth	106' 4"	(32.40m)
Unfolding height	36' 5"	(11.10m)

5-Section Boom

1st section articulation	90°	
2nd section articulation	180°	
3rd section articulation	180°	
4th section articulation	235°	
5th section articulation	230°	
1st section length	31' 10"	(9.70m)
2nd section length	25' 7"	(7.80m)
3rd section length	24' 7"	(7.49m)
4th section length	27' 11"	(8.50m)
5th section length	28' 3"	(8.60m)

General Specs

Pipeline Size (ID) metric ends	5"	(125mm)
Rotation	365°	
End hose — length	10' 0"	(3.00m)
End hose — diameter	5"	(125mm)
Outrigger spread L - R — front	27' 11"	(8.50m)
hydraulically extend out & down		
Outrigger spread L - R — rear	29' 9"	(9.08m)
hydraulically swing out & extend down		

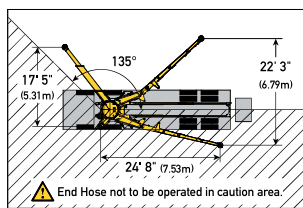
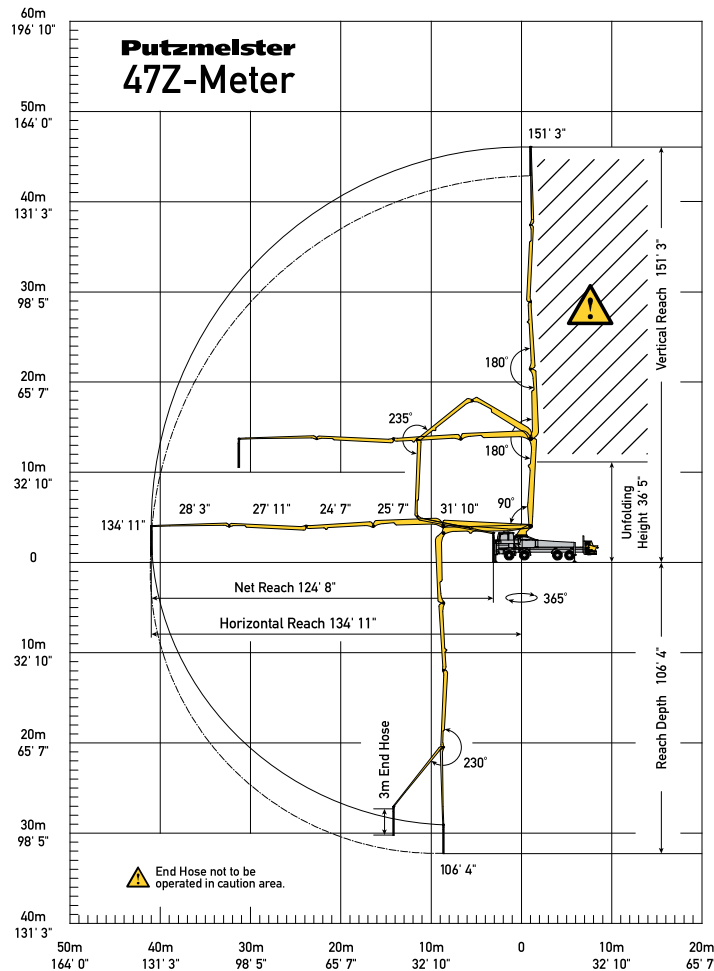
PUMP SPECIFICATIONS

	47Z.16H	47Z.18H LS
Output — rod side	210 yd ³ /hr (160m ³ /hr)	—
— piston side	141 yd ³ /hr (108m ³ /hr)	238 yd ³ /hr (182m ³ /hr)
Pressure — rod side	1,233 psi (85 bar)	—
— piston side	1,885 psi (130 bar)*	1,233 psi (85 bar)
Material cylinder diameter	9" (230mm)	10" (250mm)
Stroke length	83" (2,100mm)	83" (2,100mm)
Maximum strokes per minute — rod side	31	—
— piston side	21	29
Volume control	0-Full	0-Full
Vibrator	Standard	Standard
Hard-chromed material cylinders	Standard	Standard
Hydraulic system	Free Flow	Free Flow
Hydraulic system pressure	5,075 psi (350 bar)	5,075 psi (350 bar)
Differential cylinder diameter	5.5" (140mm)	5" (125mm)
Rod diameter	3.1" (80mm)	3.1" (80mm)
Maximum size aggregate	2.5" (63mm)	2.5" (63mm)
Water tank — pedestal	211 gal (800L)	211 gal (800L)

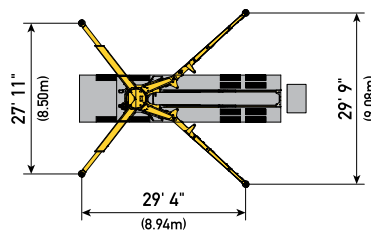
Maximum theoretical values listed.

* Applies to units mounted on PMA stock truck — MACK MRU 613

• Standard delivery line system rated at max line pressure of 1,233 psi (85 bar)



With One-Sided Support (OSS) 135°



Photos and drawings are for illustrative purposes only.

Authorized Distributor



Putzmeister America, Inc. Phone (262) 886-3200
 1733 90th Street Toll-free (800) 884-7210
 Sturtevant, WI 53177 USA Fax (262) 884-6338

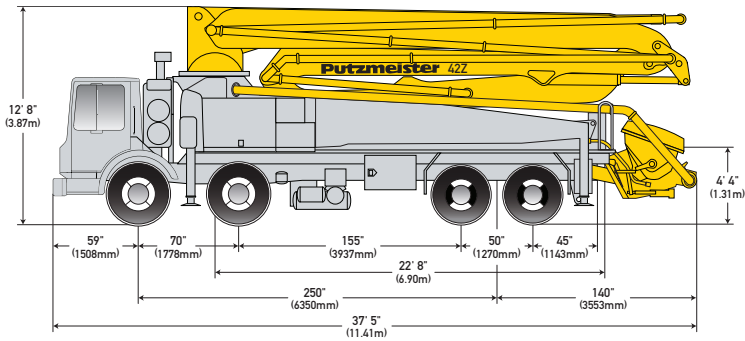
CB 4654 US



© Putzmeister America, Inc. 2017 Printed in the USA (2.51701)

PutzmeisterAmerica.com

pmr@putzam.com



42Z-METER TRUCK-MOUNTED SPECIFICATIONS

Length	37' 5"	(11.41m)
Width	8' 2"	(2.50m)
Height	12' 8"	(3.87m)
Wheelbase	250"	(6,350mm)
Front axle weight	29,991 lbs	(13,604kg)
Rear axle weight	36,274 lbs	(16,454kg)
Approx total weight	66,265 lbs	(30,058kg)

Based on Model MACK MRU 613 with .16H pump cell.
Weights are approximate and include pump, boom, truck, driver and some fuel. Varies with options selected.
Dimensions will vary with different truck makes, models and specifications.

BOOM SPECIFICATIONS | Z-FOLD DESIGN

Height & Reach		
Vertical reach	136' 6"	(41.60m)
Horizontal reach	122' 5"	(37.30m)
Reach from front of truck*	113' 2"	(34.50m)
Reach depth	101' 8"	(31.00m)
Unfolding height	28' 3"	(8.60m)

5-Section Boom		
1st section articulation	90°	
2nd section articulation	180°	
3rd section articulation	180°	
4th section articulation	246°	
5th section articulation	235°	

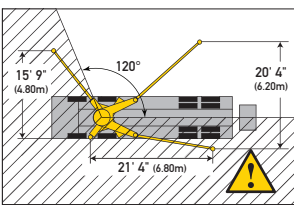
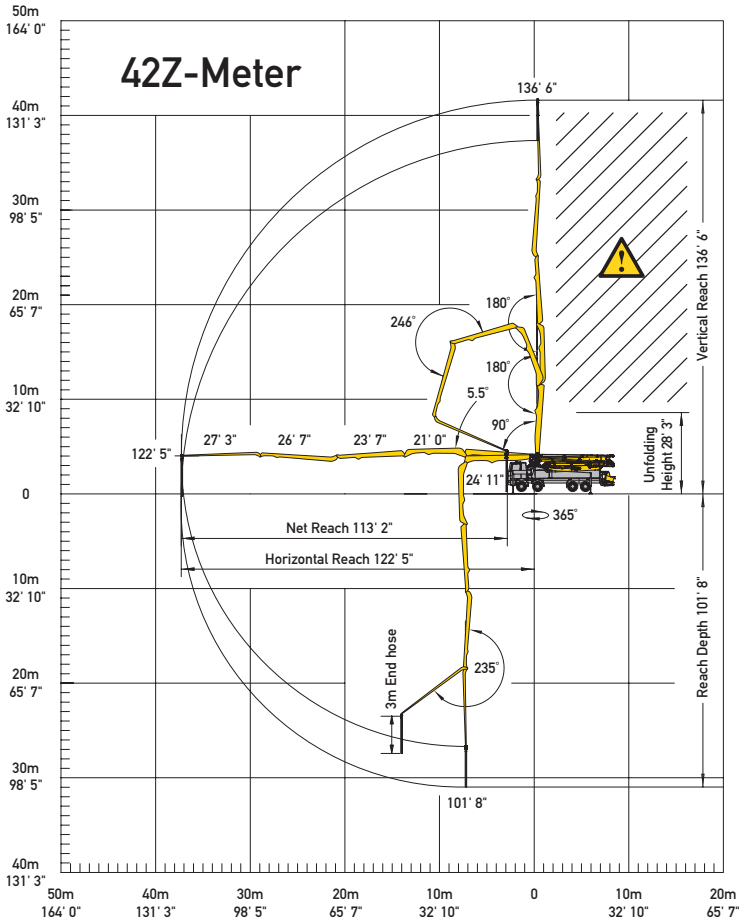
1st section length	24' 11"	(7.60m)
2nd section length	21' 0"	(6.40m)
3rd section length	23' 7"	(7.20m)
4th section length	26' 7"	(8.10m)
5th section length	27' 2"	(8.30m)

General Specs		
Pipeline Size (ID) metric ends	5"	(125mm)
Rotation	365°	
End hose — length	10' 0"	(3.00m)
End hose — diameter	5"	(125mm)
Outrigger spread L - R — front	24' 7"	(7.50m)
hydraulically extend out & down		
Outrigger spread L - R — rear	25' 11"	(7.90m)
hydraulically swing out & extend down		

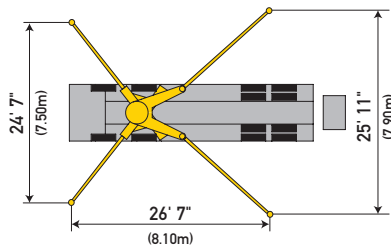
PUMP SPECIFICATIONS

	42Z.16H	42Z.20H
Output — rod side	210 yd ³ /hr (160m ³ /hr)	—
— piston side	146 yd ³ /hr (112m ³ /hr)	260 yd ³ /hr (200m ³ /hr)
Pressure — rod side	1,233 psi (85 bar)	—
— piston side	1,885 psi (130 bar)*	1,233 psi (85 bar)
Material cylinder diameter	9" (230mm)	11" (280mm)
Stroke length	83" (2,100mm)	83" (2,100mm)
Max strokes per minute		
— rod side	31	—
— piston side	21	26
Volume control	0-Full	0-Full
Vibrator	Standard	Standard
Hard-chromed material cylinders	Standard	Standard
Hydraulic system	Free Flow	Free Flow
Hydraulic system pressure	5,075 psi (350 bar)	5,075 psi (350 bar)
Differential cylinder diameter	5.5" (140mm)	5.5" (140mm)
Rod diameter	3.1" (80mm)	3.1" (80mm)
Maximum size aggregate	2.5" (63mm)	2.5" (63mm)
Water tank — pedestal	185 gal (700L)	185 gal (700L)

Maximum theoretical values listed.
* Applies to units mounted on PMA stock truck — MACK MRU 613
• Standard delivery line system rated at max line pressure of 1,233 psi (85 bar)



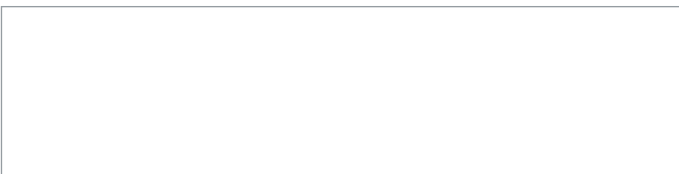
With one-sided support (OSS) 120°



End hose not to be operated in caution area.

Photos and drawings are for illustrative purposes only.

Authorized Distributor

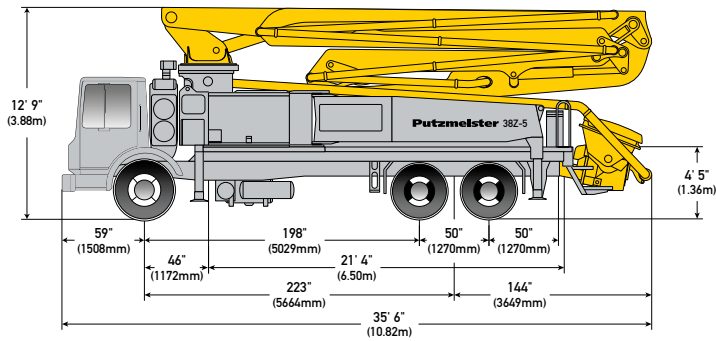


Putzmeister

Putzmeister America, Inc. Phone (262) 886-3200
1733 90th Street Toll-free (800) 884-7210
Sturtevant, WI 53177 USA Fax (262) 884-6338

PutzmeisterAmerica.com

pmr@putzam.com



38Z-5-METER TRUCK-MOUNTED SPECIFICATIONS

Length	35' 6"	(10.82m)
Width	8' 2"	(2.50m)
Height	12' 9"	(3.88m)
Wheelbase	223"	(5,664mm)
Front axle weight	18,620 lbs	(8,446kg)
Rear axle weight	35,980 lbs	(16,320kg)
Approx. total weight	54,600 lbs	(24,766kg)

Based on Model MACK MRU 613 with .16H pump cell.
Weights are approximate and include pump, boom, truck, driver and full fuel tank.
Varies with options selected.
Dimensions will vary with different truck makes, models and specifications.

BOOM SPECIFICATIONS | Z-FOLD DESIGN

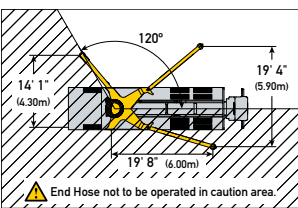
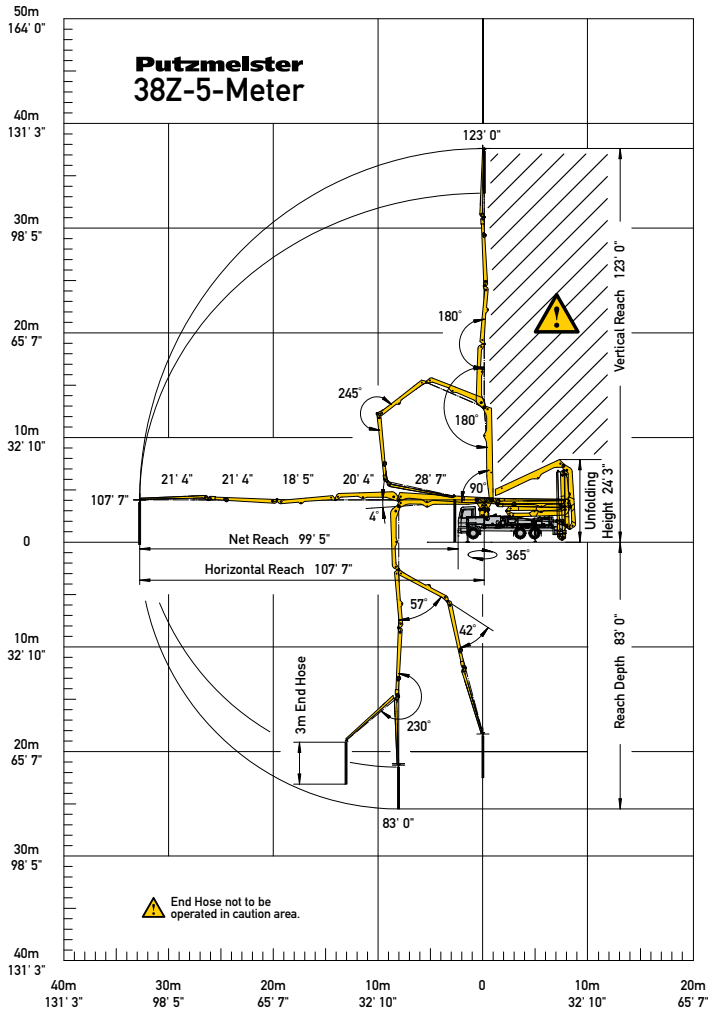
Height & Reach		
Vertical reach	123' 0"	(37.50m)
Horizontal reach	107' 7"	(32.80m)
Reach from front of truck*	99' 5"	(30.30m)
Reach depth	83' 0"	(25.30m)
Unfolding height	24' 3"	(7.40m)

5-Section Boom		
1st section articulation	90°	
2nd section articulation	180°	
3rd section articulation	180°	
4th section articulation	245°	
5th section articulation	230°	
1st section length	28' 7"	(8.70m)
2nd section length	20' 4"	(6.20m)
3rd section length	18' 5"	(5.60m)
4th section length	21' 4"	(6.50m)
5th section length	21' 4"	(6.50m)

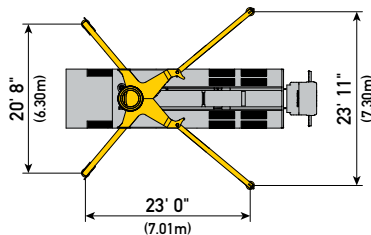
General Specs		
Pipeline Size (ID) metric ends	5"	(125mm)
Rotation	365°	
End hose — length	10' 0"	(3.00m)
End hose — diameter	5"	(125mm)
Outrigger spread L - R — front	20' 8"	(6.30m)
hydraulically extend out & down		
Outrigger spread L - R — rear	23' 11"	(7.30m)
hydraulically swing out & extend down		

PUMP SPECIFICATIONS		38Z-5.16H	38Z-5.18H LS
Output — rod side	210 yd ³ /hr (160m ³ /hr)		—
Output — piston side	141 yd ³ /hr (108m ³ /hr)		238 yd ³ /hr (182m ³ /hr)
Pressure — rod side	1,233 psi (85 bar)		—
Pressure — piston side	1,885 psi (130 bar)*		1,233 psi (85 bar)*
Material cylinder diameter	9" (230mm)		10" (250mm)
Stroke length	83" (2,100mm)		83" (2,100mm)
Maximum strokes per minute — rod side	31		—
Maximum strokes per minute — piston side	21		29
Volume control	0-Full		0-Full
Vibrator	Standard		Standard
Hard-chromed material cylinders	Standard		Standard
Hydraulic system	Free Flow		Free Flow
Hydraulic system pressure	5,075 psi (350 bar)		5,075 psi (350 bar)
Differential cylinder diameter	5.5" (140mm)		5.5" (140mm)
Rod diameter	3.1" (80mm)		3.1" (80mm)
Maximum size aggregate	2.5" (63mm)		2.5" (63mm)
Water tank — pedestal	185 gal (700L)		185 gal (700L)

Maximum theoretical values listed.
* Applies to units mounted on PMA stock truck — MACK MRU 613
• Standard delivery line system rated at max line pressure of 1,233 psi (85 bar)

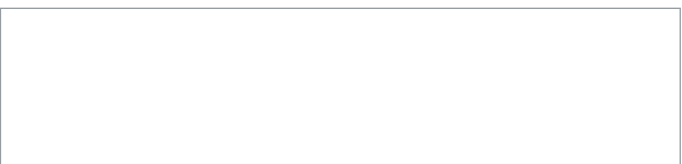


Optional One-Sided Support (OSS) 120°



Photos and drawings are for illustrative purposes only.

Authorized Distributor



Putzmeister America, Inc. Phone (262) 886-3200
1733 90th Street Toll-free (800) 884-7210
Sturtevant, WI 53177 USA Fax (262) 884-6338

PutzmeisterAmerica.com

pmr@putzam.com

CB 4246-2 US



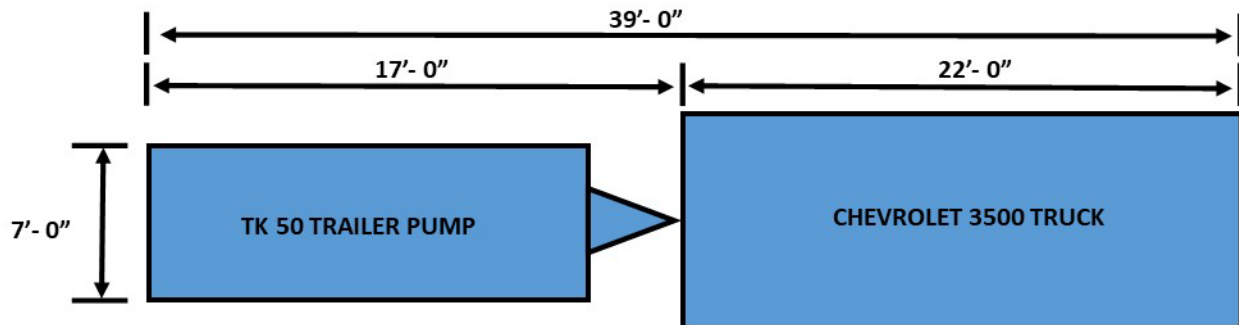
© Putzmeister America, Inc. 2017

Printed in the USA (1.51701)

PUTZMEISTER TK 50 TRAILER PUMP SPECIFICATIONS



Max volume output	54 yd ³ /hr	41m ³ /hr
Max concrete pressure	1150 psi	79 bar
Max aggregate size	1.5"	38mm
Horiz pumping distance	900 ft	275m
Vertical pumping distance	400 ft	122m



"DO IT IN CONCRETE"